



# **IBM AMS – Yantra Training Mobile Setup**

**Circuit City Stores, Inc.  
IBM Global Services**

# Revision History

---

This is a snapshot of an on-line document. Paper copies are valid only on the day they are printed. Refer to the author if you are in any doubt about the accuracy of this document.

Revision Number	Revision Date	Author(s)	Summary of Changes	Changes marked
0.1		Brian Covington	Draft	
0.2	1/26/07	Brian Covington	Corrected .cab file name on pages 5, 8	
.3	1/29/07	Tamara Harris	Reformatted content	

# Table of Contents

---

Overview.....	1
Purpose.....	1
Installation .....	2
Prerequisite Installation.....	2
Component Installation .....	2
Network Configuration.....	6
Notebook Network Configuration .....	6
Notebook Network Power Control Configuration .....	9
Mobile Network Configuration .....	11
Validation.....	15
Validate Installation .....	15

# Overview

---

This document will be the repository of all information needed to Setup a Hand-Held for Yantra Training.

## Purpose

---

The purpose of this document is to document installation of Yantra Mobile for Yantra Laptop Training.

# Installation

---

This section provides the steps required to install and test the successful installation of the Yantra Mobile.

## Prerequisite Installation

---

List all the software that needs to be installed for Yantra Mobile:

- Yantra 7x (refer to Yantra\_training\_Environment.doc for further information)
- Active Directory

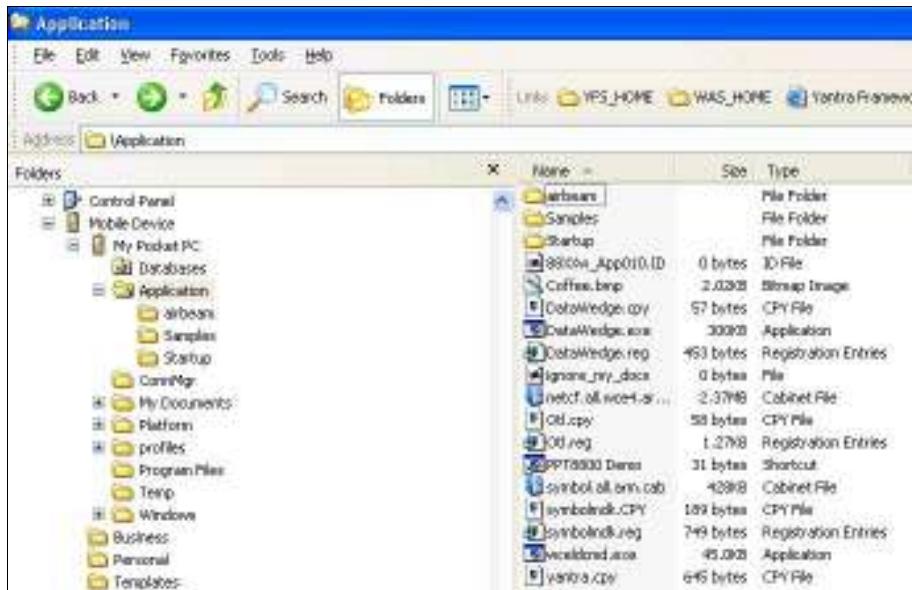
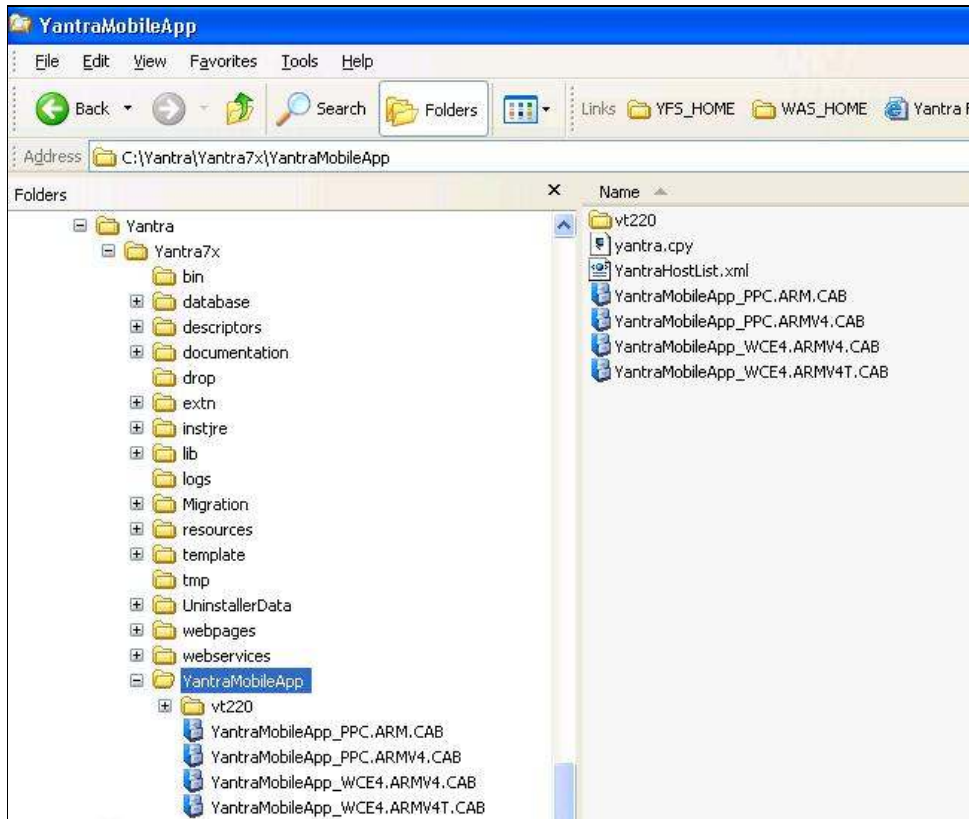
## Component Installation

---

**Step 1** Connect to the hand-held using Active Sync.



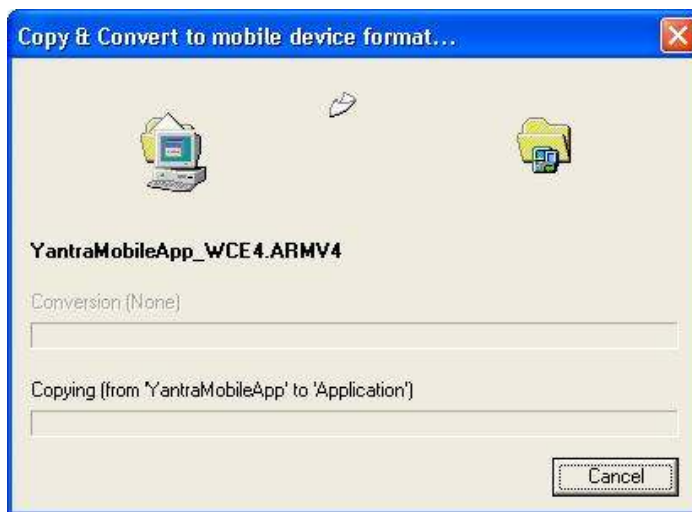
**Step 2** Copy **YantraMobileApp\_WCE4.ARMV4.CAB** from %YFS\_HOME%\YantraMobileApp to \Mobile Device\My Pocket PCApplication.



**Step 3** Click OK.



The window below displays.



**Step 4** On the hand-held, click **Start -> Programs -> File Explorer**.



**Step 5** Select **\My Device\Application**.



**Step 6** Run **YantraMobileApp\_WCE4.ARMV4.CAB**.

**Step 7** Select **%YFS\_HOME%\YantraMobileApp** and edit **YantraHostList.xml** to appear exactly as follows:

```
<YantraHostList>
  <YantraHost name='Training' URL='IP_ADDRESS:9080'/?>
</YantraHostList>
```

Obs.: IP\_ADDRESS is the notebook's IP address

**Step 8** Copy **YantraHostList.xml** to **\Mobile Device\My Pocket PC\Program Files\YantraMobileApp**

**Step 9** Select **\Mobile Device\My Pocket PC\Program Files\YantraMobileApp** and rename **YMAProperties.ppc.xml** to **YMAProperties.xml**.

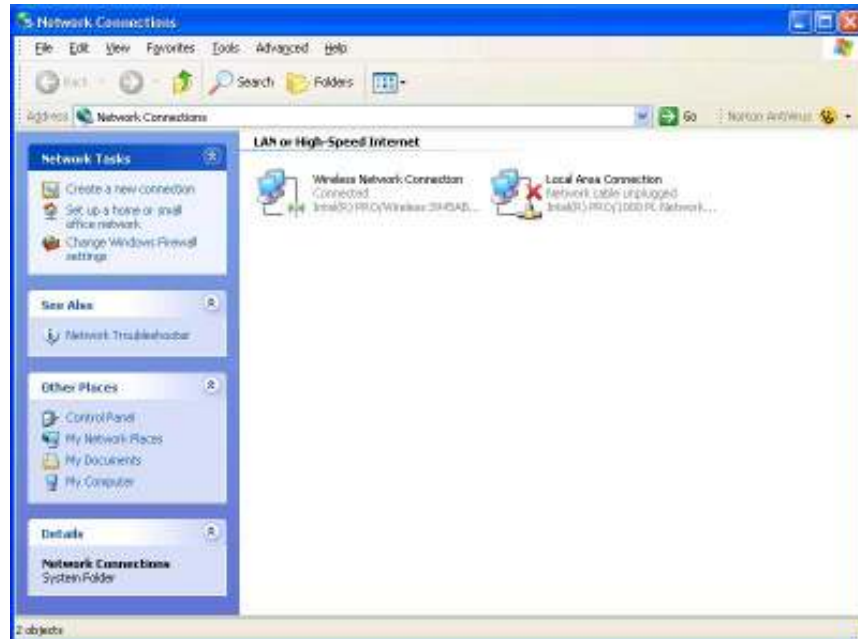


# Network Configuration

---

## Notebook Network Configuration

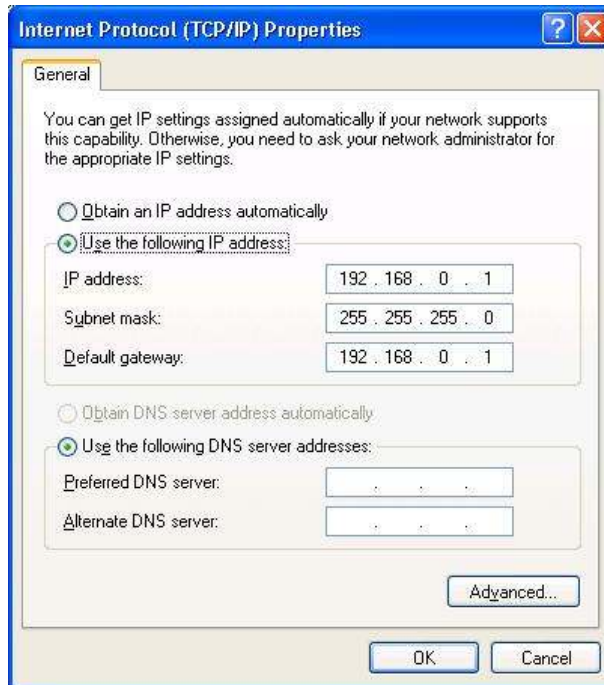
Step 1 On Notebook, select **Network Connections**.



Step 2 Open **Wireless Network Connection Properties**.



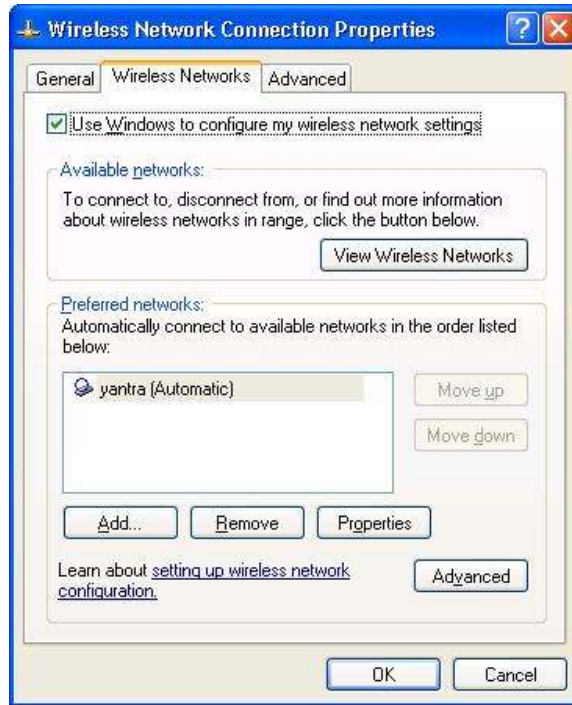
**Step 3** Open **Internet Protocol (TCP/IP) Properties**.



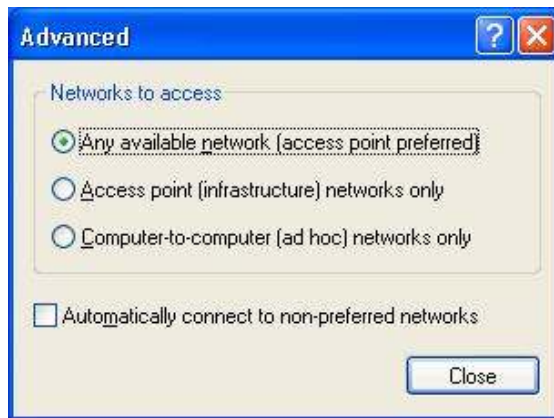
**Step 4** Check Use the following IP address option and type an IP address (it should be the same used in YMAProperties.xml and each notebook must have a different address) and a subnet mask.

**Step 5** Click OK.

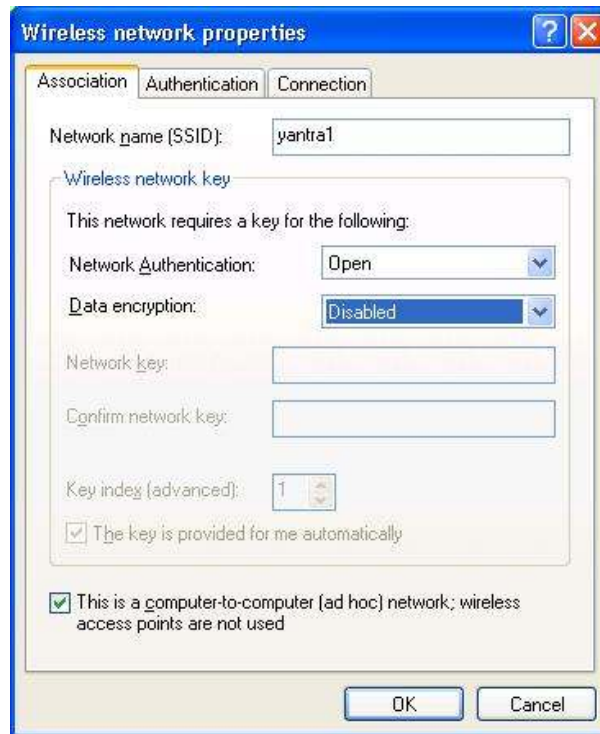
**Step 6** Select **Wireless Networks**.



- Step 7** Check **Use windows to configure my wireless network settings**.
- Step 8** Click **Advanced**.
- Step 9** Select **Computer-to-Computer (ad hoc) networks only**.



- Step 10** Click **Close**.
- Step 11** In Preferred Networks click **Add**.
- Step 12** Give a SSID. i.e. yantraX (X is a number from 1 to 999, each notebook must have a different number). For Network Authentication select **Open**. Set Data encryption to **Disabled**. Check **This is a computer-computer (ad hoc) network; wireless access points are not used**.



**Step 13** Click OK.

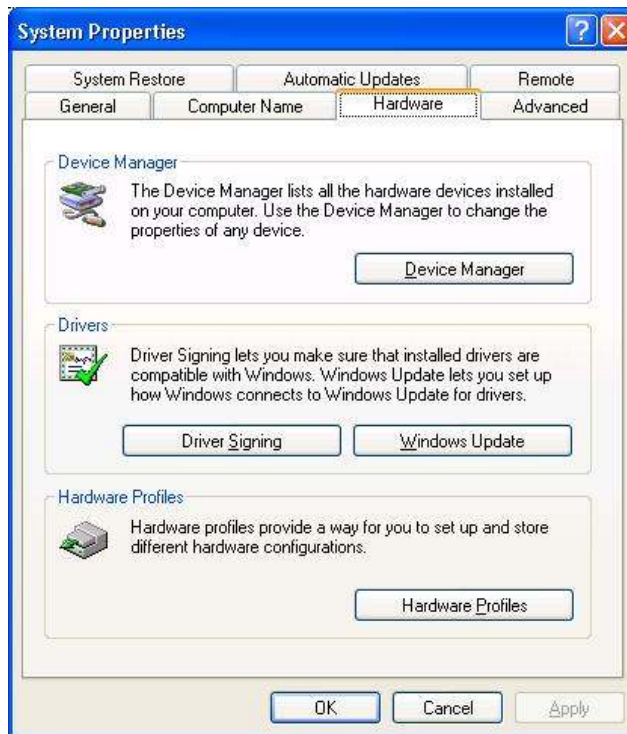
**Step 14** Click OK.

## Notebook Network Power Control Configuration

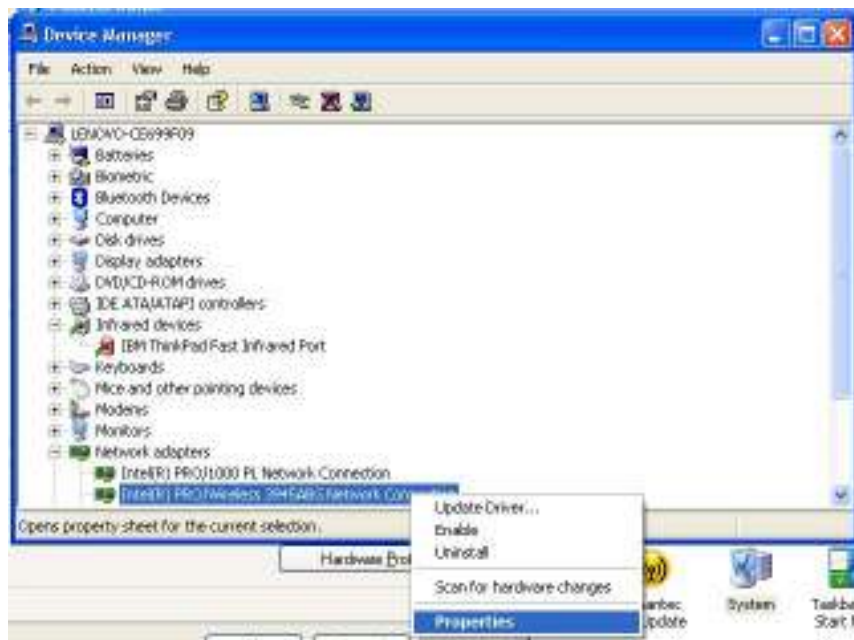
**Step 1** On Notebook, click **Start -> Control Panel**



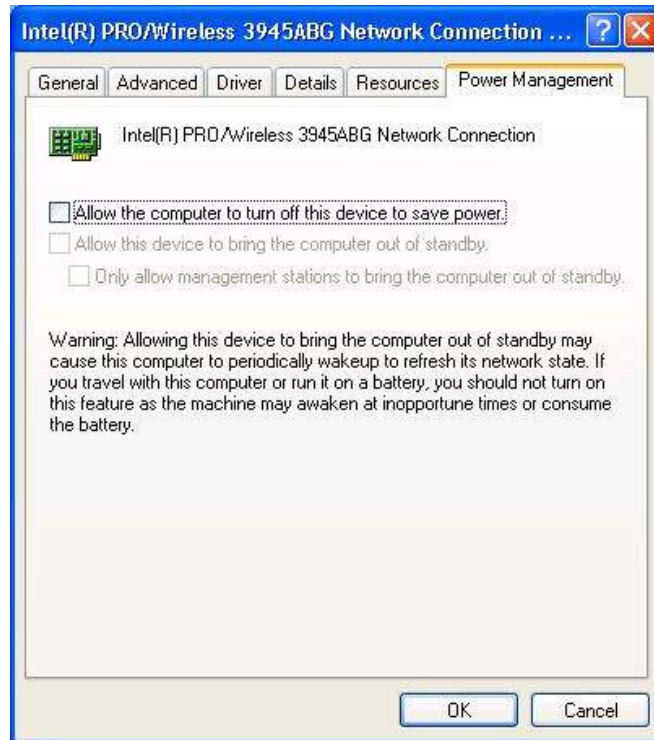
- Step 2 Select System.
- Step 3 Select Hardware -> Device Manager.



- Step 4 Select your Wireless Network Device and select Properties.



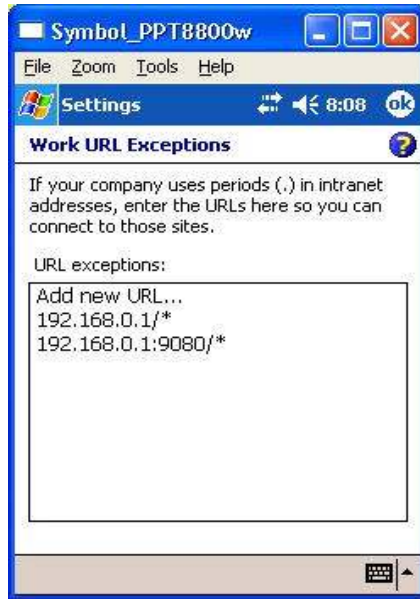
- Step 5** Select **Power Management** and uncheck **Allow the computer to turn off this device to save power.**



- Step 6** Click OK.

## Mobile Network Configuration

- Step 1** On the hand-held select **Start -> Settings -> Connections -> Connections.**
- Step 2** Select **Advanced -> Select Networks -> Exceptions.**
- Step 3** Add two new URLs: **IP\_ADDRESS** and **IP\_ADDRESS:9080** (**IP\_ADDRESS** is the notebook's IP address).



- Step 4** Click OK.
- Step 5** Click OK.
- Step 6** Click OK.
- Step 7** Close the **Settings** window.
- Step 8** Click red exclamation point or **Network Adapter Card** icon at the bottom of the screen and click **Options**.



- Step 9** Check only the options: **Access Ad-hoc networks**, **Disable Profile Roaming** and **Enable Sounds**.



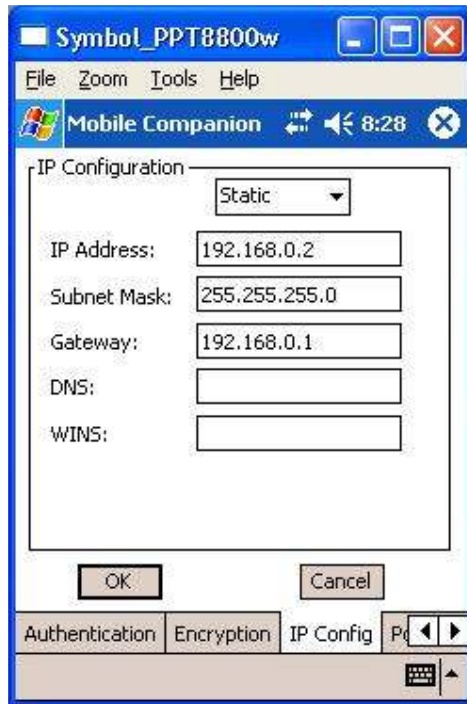
- Step 10** Click OK.
- Step 11** Click the red exclamation point at the bottom of the screen and click **Find WLANs**
- Step 12** Click **Search**.
- Step 13** Chose the appropriate Available WLAN Network and click **Connect** (**Note:** Only the mobile device should be connected to each network).



- Step 14** In this new window select **IP Config**.



**Step 15** Change **IP Configuration** to **Static**. IP Address should be X.P.T.O+1 (X,P,T and O represents each part from notebook's IP address) and subnet mask should be the same from notebook configuration.



**Step 16** Click OK.

# Validation

---

## Validate Installation

---

**Step 1** On the hand-held select **Start -> Programs**.



**Step 2** Run **YantraMobileApp**,  
**Step 3** Type a User Id and a Password and click **Login**.

